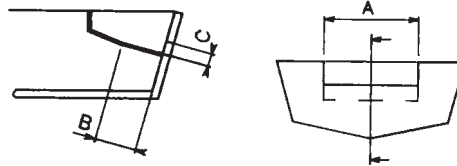


Splashwell Dimensions Requirements

4-48061 and 4-48063



SPLASHWELL DIMENSIONS REQUIREMENTS

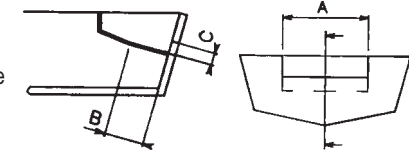
For twin engine applications minimum engine centre distance is 550mm (21.6").

No. of Engines	A	B	C
1	550mm - 21.25"	152mm - 5.98"	152mm - 5.98"
2	1110mm - 43.70"	152mm - 5.98"	152mm - 5.98"

4-48066, 4-48067 and 4-48068

SPLASHWELL DIMENSIONS REQUIREMENTS

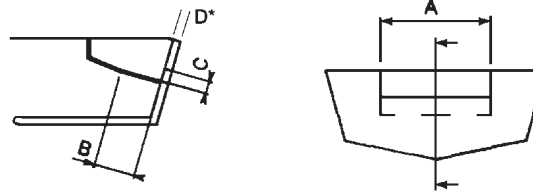
For twin engine applications minimum engine centre distance is 550mm (21.6").



No. of engines	A	B	C
1	540mm - 21.25"	152mm - 5.98"	152mm - 5.98"
2	1110mm - 43.70"	152mm - 5.98"	152mm - 5.98"

4-47009

SPLASHWELL DIMENSIONS REQUIREMENTS

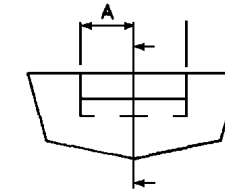


*Assumption that engine is mounted to transom as low as possible. Maximum transom thickness increases as engine is raised off the transom.

Engine	A	B	C	D*
Suzuki	787mm - 31"	203mm - 8"	140mm - 5.5"	53mm - 2.1"
Honda (1995 to date)	787mm - 31"	203mm - 8"	140mm - 5.5"	60mm - 2.4"
Yamaha	787mm - 31"	203mm - 8"	140mm - 5.5"	60mm - 2.4"
Mercury/Mariner (1989 to date)	787mm - 31"	203mm - 8"	140mm - 5.5"	63mm - 2.5"
Force (1996 to date)	787mm - 31"	203mm - 8"	140mm - 5.5"	63mm - 2.5"
OMC Johnson/ Evinrude	787mm - 31"	203mm - 8"	140mm - 5.5"	73mm - 2.9"

4-48060 and 4-48064

SPLASHWELL DIMENSIONS REQUIREMENTS



A = 340mm (13.4") minimum